

# SECUREFOLD 100

Featuring R-Loc

FOR TIMBER FOLDING DOORS UP TO 100kg EACH

P C Henderson's Securefold system is the ultimate in exterior folding systems. The system has been designed to maximise the flexibility of a room's living space, enabling the user to have an indoor/outdoor experience by fully opening up exterior walls.

Operating with effortless ease, Securefold combines the benefits of folding doors with the ability to keep out the weather with no corrosion worries. This modern, contemporary feature will increase available living space, whilst taking full advantage of natural light.

Securefold 100 also includes the addition of a further product enhancement, R-Loc. Designed with our customers in mind, R-Loc is a clever ratchet system that enables installers to easily heighten or lower a door, eliminating the process of locking the hanger in place with a grub screw. R-Loc has been specifically designed for the Securefold range - further enhancing its credentials as one of the best folding door systems in the market.

## APPLICATIONS

- ▶ Residential and commercial timber exterior folding applications.
- ▶ Specially suited to coastal environments with all components made from 316 stainless steel, anodised aluminium or polymers.
- ▶ End folding timber doors folding to one or both sides.
- ▶ Standard folding configuration features doors folding outward. Inward folding doors can be used where the doors are not directly exposed to the weather.
- ▶ Premium security features.
- ▶ Recognised weather resistance.

## DOOR SPECIFICATION

For individual door leaves:

Maximum leaf height	3300mm
Maximum leaf weight	100kg
Maximum leaf width	1000mm
Maximum leaf thickness	35-68mm*

\*For doors between 35-47mm use an alternative to standard flush bolt

The folding unit is not hinged to post, but is pivoted in the track and floor. All door leaves are of equal width. A swing leaf can be included by incorporating an odd number of leaves. For full weather protection, doors, frame and track should incorporate the seals provided in the Securefold range. Sill and frame construction should be in accordance with the Securefold fixing instructions. Intermediate hangers and hinges are non rebated. End hangers and pivots require rebating.

## GEAR SPECIFICATION

Track:	250
Material:	Anodised aluminium (anodising 25 microns)
Standard lengths:	2000, 2500, 3000, 3500, 4000, 5000 and 6000mm
Hanger/Hinge/Guide sets:	SF1 pivot set SF2 end hanger/guide set SF3 hinge set with handle SF4 intermediate hanger/hinge/guide set SF5 hinge set inward opening SF6 hinge set offset inward opening SF7 hinge set offset outward opening SF8 rebated end hanger/guide set* SF9 intermediate pivot hinge for doors above 2200mm SF10 face fix handle (optional) SF94T aluminium threshold
Channel:	94P polypropylene guide channel 94SC anodised aluminium support channel Threshold & channel lengths correspond with standard track lengths
Seals:	AQ63B door perimeter seal brown AQ21B frame perimeter seal brown BS10 track seal black
Accessories:	Lockable & non-lockable flush bolts available in 190, 450 & 600mm versions in gold, satin finish, chrome or black.

\* End hanger set for a pair of rebated meeting doors.

CI/SIB

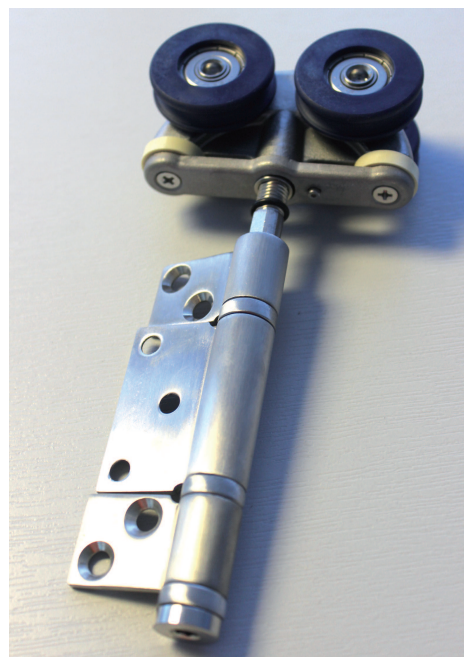
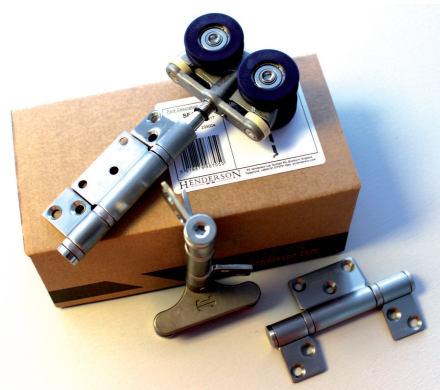
(31.49)

Xh

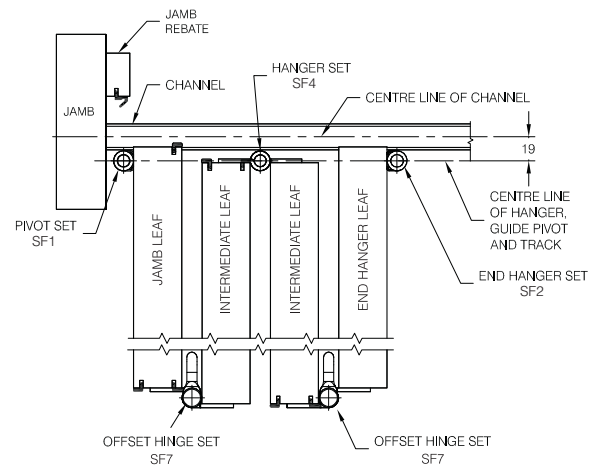
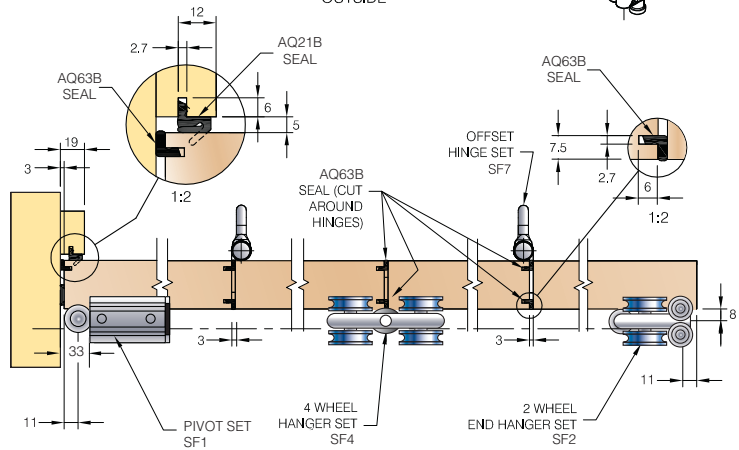
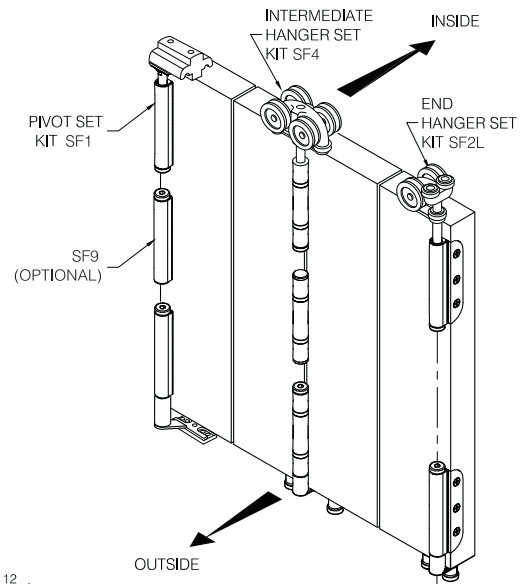
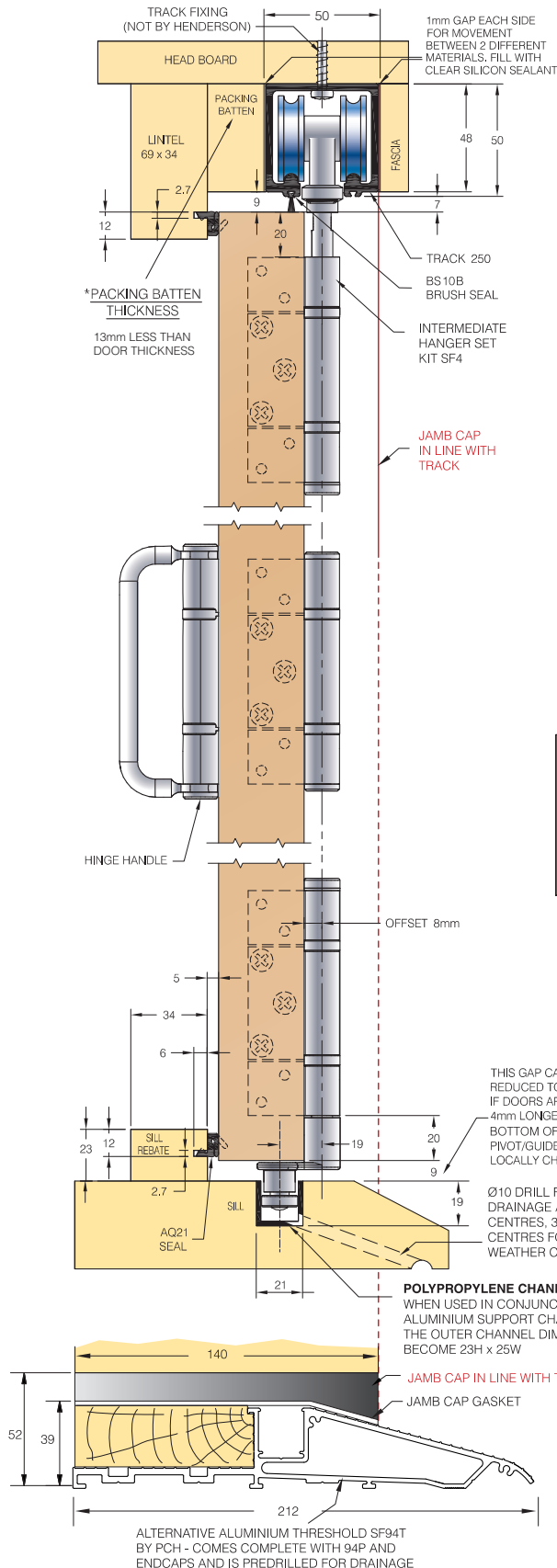
ISSUE 8

SF

## EXTERIOR FOLDING SYSTEM



# SECUREFOLD 100 *Featuring R-Loc*



**HENDERSON**

P C Henderson Limited, Durham Road, Bowburn, County Durham DH6 5NG, UK. Web: [www.pchenderson.com](http://www.pchenderson.com)  
 UK Customer Services Department: Tel: +44 (0)191 377 7345 Fax: +44 (0)191 377 3116 Email: [sales@pchenderson.com](mailto:sales@pchenderson.com)  
 Export Department: Tel: +44 (0)191 377 7346 Fax: +44 (0)191 377 0755 Email: [international@pchenderson.com](mailto:international@pchenderson.com)  
 For all technical queries email our Technical Department: [technical@pchenderson.com](mailto:technical@pchenderson.com)